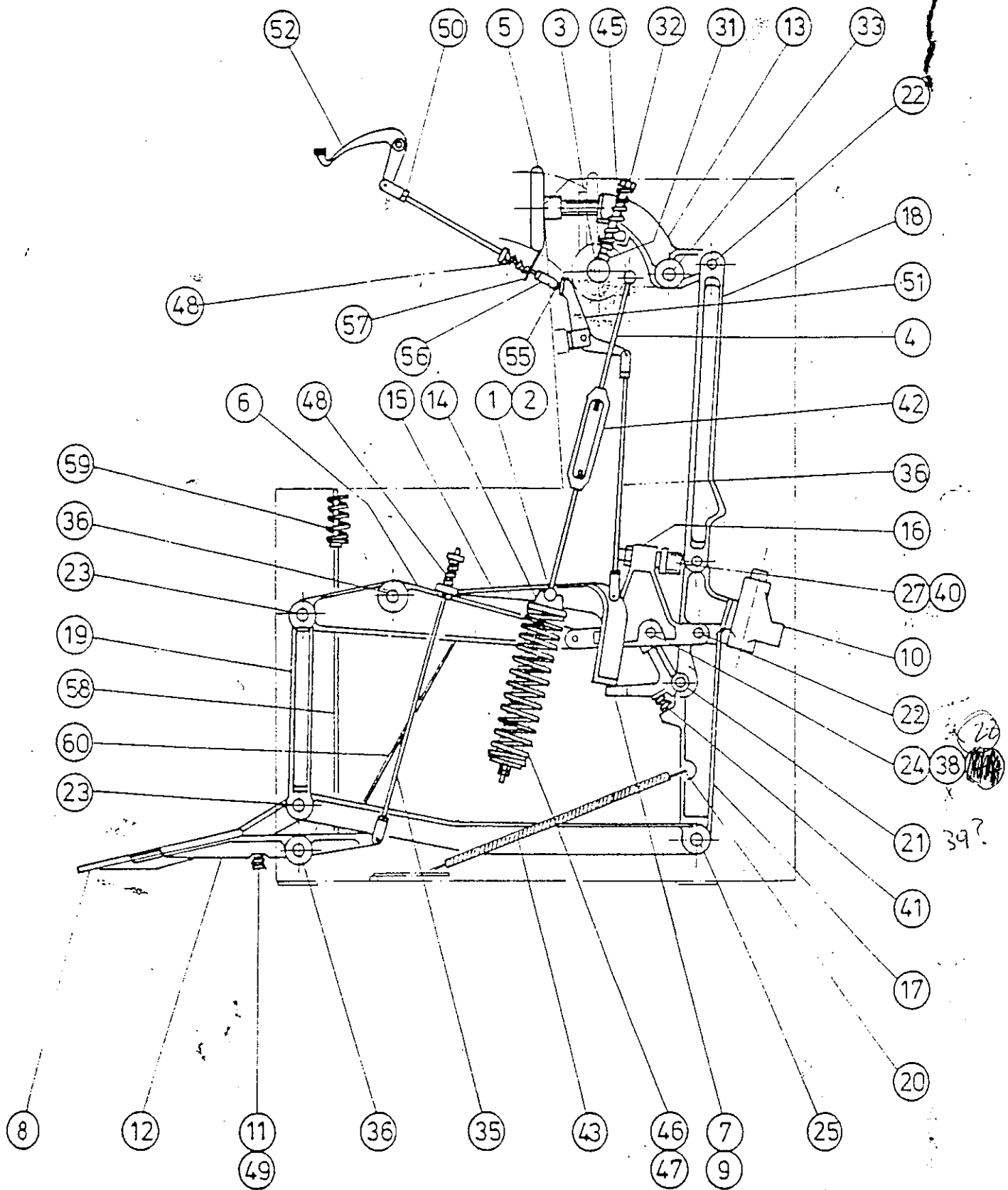


HORSCROFT PRESSING MACHINE



LINKAGE ARRANGEMENT.

LINKAGE

<u>ITEM</u>	<u>DESCRIPTION</u>	<u>PART NO.</u>
1.	GUIDE ROD PIN L.H.	7502
2.	EXTENDED GUIDE ROD PIN R.H.	7505
3.	YOKE PIVOT SHAFT	7504
4.	UPPER SPRING ADJUSTER	7522
5.	PRESSURE ADJUSTER	7529
6.	FRONT TOGGLE	7575
7.	RELEASE TOGGLE	7576
8.	MAIN PEDAL	7584
9.	LOCKING LATCH	7590
10.	OIL CHECK	7591
11.	PEDAL STOP ADAPTOR	7546
12.	RELEASE PEDAL	7613
13.	BELL CRANK	7655
14.	SPRING ROD GUIDE	7656
15.	BALANCE SPRING HEAD	7657
16.	PUSH LINK	7659
17.	BACK LEVER	7660
18.	BACK LEVER LINK	7661
19.	PEDAL CONNECTING ROD	
20.	LINK PIN	7663
21.	LOCKING LATCH PIVOT PIN	7664
22.	PUSH LINK PIN	7665
23.	CONNECTING LINK PIN	7666
24.	LOCKING ROLLER PIN	7667
25.	BACK LEVER SHAFT	7668
26.	JAM NUT	7669
27.	BUMPER CUP	7670

LINKAGE
(Continued)

<u>ITEM</u>	<u>DESCRIPTION</u>	<u>PART NO.</u>
28.	BEARING CASE	HM 7671
29.	ROLLER	HM 7673
30.	SPRING YOKE	HM 7674
31.	SHAFT SHOE	HM7675
32.	BOLT	HM7676
33.	PIVOT SHAFT	HM7677
34.	BALANCE SPRING SHAFT	HM7678
35.	EQQT. RELEASE ROD	HM7691
36.	LOWER SPRING ROD	HM7801
37.	FRONT PIVOT SHAFT	HM7957
38.	TORRINGTON BEARING B.812	XBB812 (CASING HM7671)
39.	TORRINGTON BEARING B.1012	XB812 (Rubber "O" Ring XRWP/1/255)
40.	RUBBER BUMPER 1½" ϕ x 1" LONG	XRBB11/2 x 1
41.	RUBBER WASHER ½" ID x 27/32" OD x 5/16" LONG	XWP/1/255
42.	TURN BUCKLE ½" BSW	
43.	LOWER SPRING	H XSP-158
44.	LOCKING LATCH SPRING	H XSP CS14
45.	BELL CRANK SPRING	H XSP CS63
46.	BALANCE SPRING INNER	H XSP CS64
47.	BALANCE SPRING OUTER	H XSP CS65
48.	RELEASE SPRING	H XSP CS72
49.	PEDAL SPRING	XSP CS75 H XSP CS 3
<u>WHEN MACHINES ARE FITTED WITH HAND RELEASE</u>		
50.	CLEVIS	HM 7573
51.	HAND RELEASE TOGGLE	HM7677
52.	HAND RELEASE LEVER	HM7578

10 only

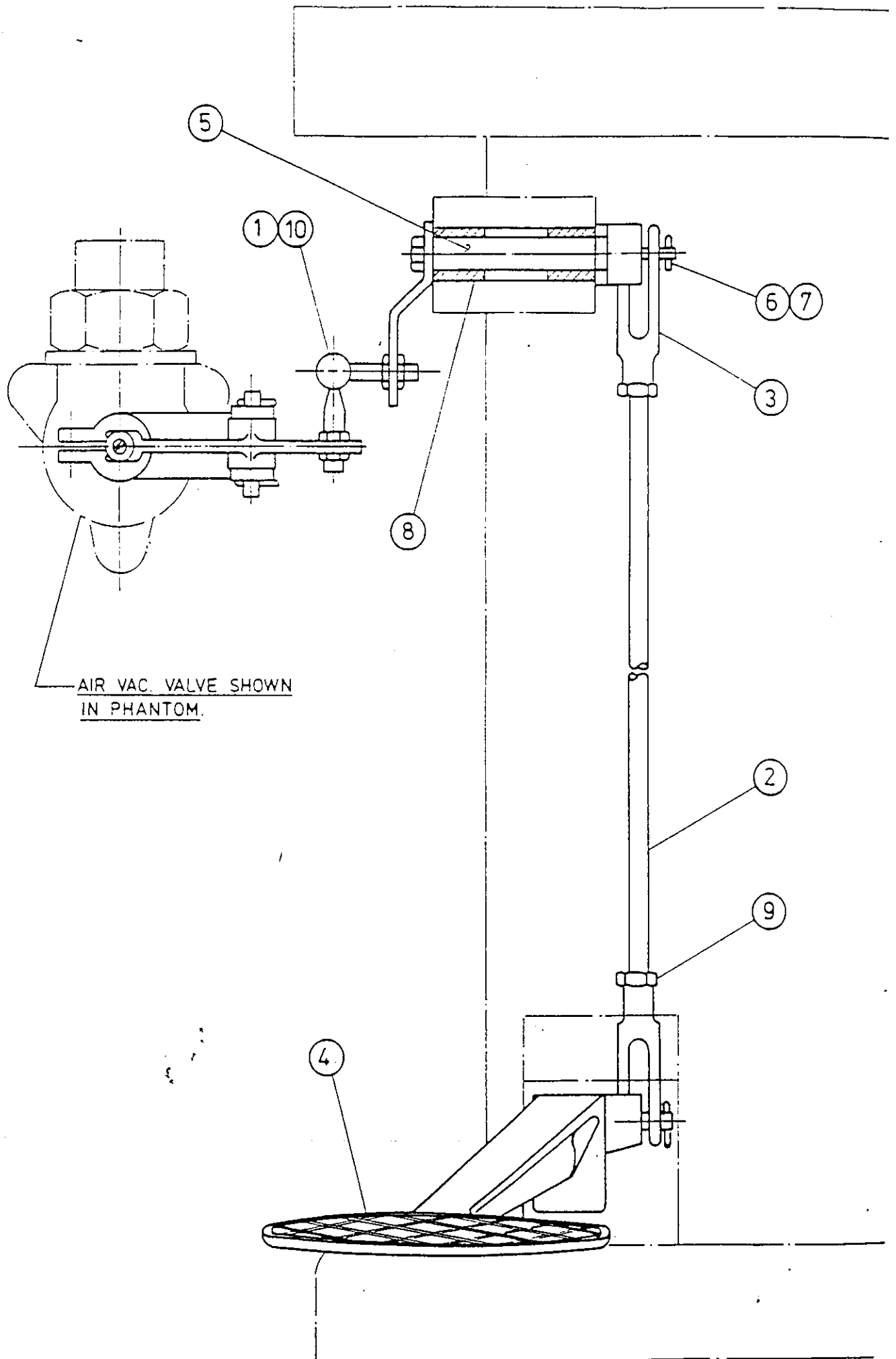
LINKAGE
(Continued)

<u>ITEM</u>	<u>DESCRIPTION</u>	<u>PART NO.</u>
53.	TOGGLE BRACKET	7684
54.	BUSH BRACKET	7685
55.	RELEASE ROLLER	7686
56.	ROLLER CLEVIS	7687
57.	BUSH	7693

WHEN MACHINES ARE FITTED WITH BUCK STEAM OR VAC.

58.	BUCK VALVE LEVER CON ROD	7610
59.	BUCK VALVE LEVER CON ROD SPRING	CS67
60.	VAC VALVE CON ROD	7725

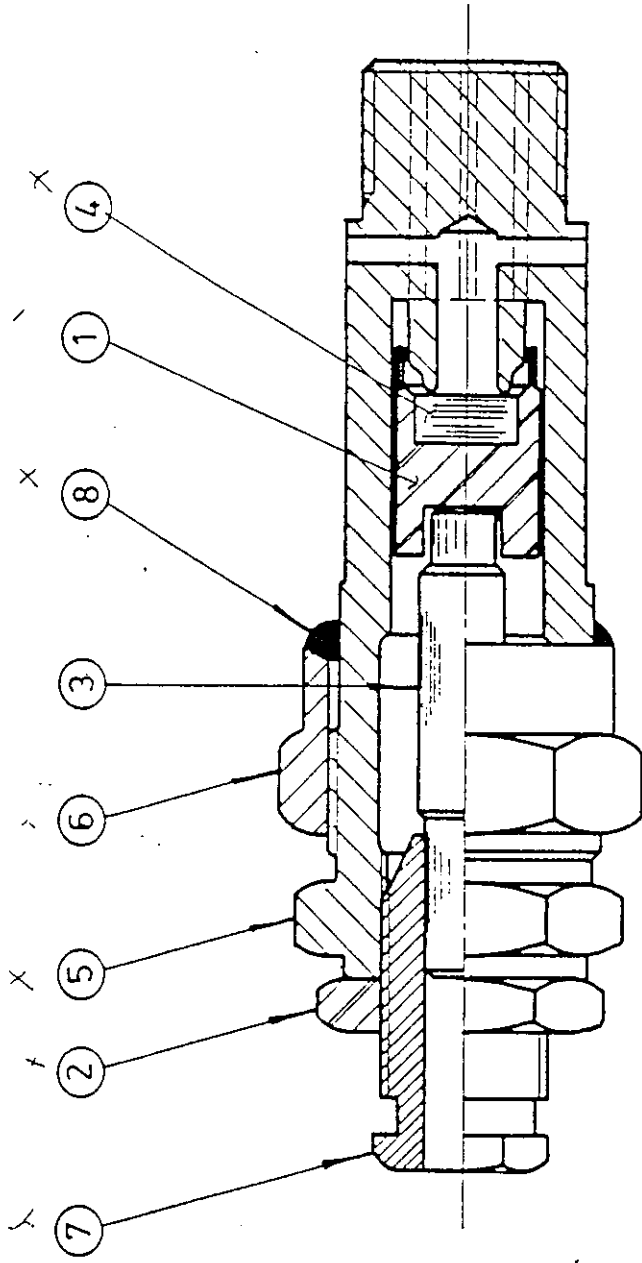
---o0o---



S.A. AIR VAC. VALVE LINKAGE.

S.A. AIR VAC. VALVE LINKAGE

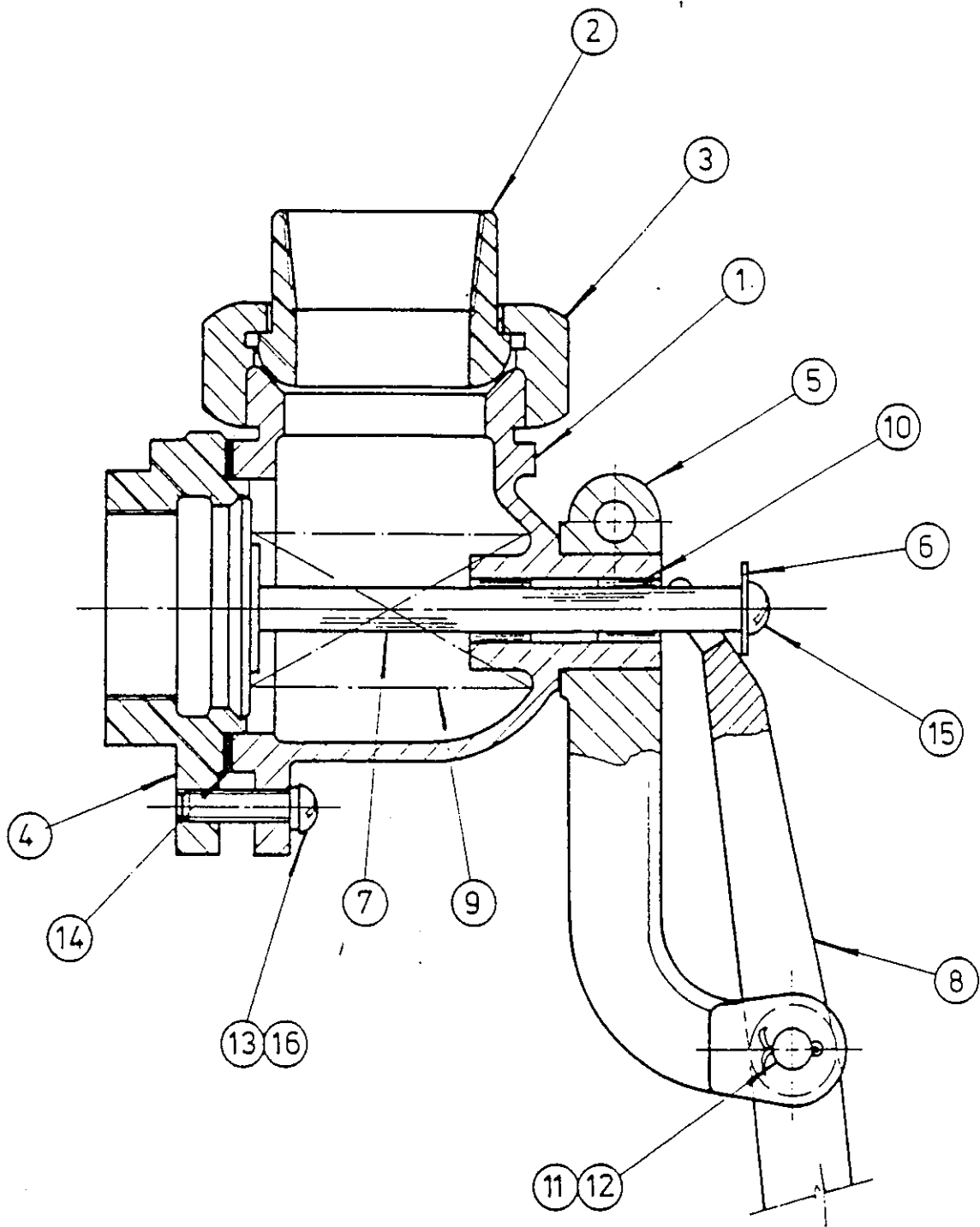
<u>ITEM</u>	<u>DESCRIPTION</u>	<u>PART NO.</u>
1.	BALL JOINT ROD	7538
2.	CONNECTING ROD	7539
3.	$\frac{5''}{16}$ S.A.E. CLEVIS YOKE	7573
4.	S.A. VAC. PEDAL	7614
5.	S.A. VAC. ARM. SHAFT & BRACKET	7719
6.	$\frac{5''}{16}$ CLEVIS PIN	
7.	SPLIT PIN $\frac{1''}{16}$ ϕ x $\frac{3''}{4}$ L'G.	
8.	OILITE BUSH $\frac{1}{2}$ " I.D. x $\frac{3''}{4}$ O.D. x $\frac{1}{2}$ " L'G.	
9.	$\frac{5''}{16}$ S.A.E. LOCK NUT	
10.	$\frac{1}{2}$ " BALL JOINT	



S.A. PACKLESS BUCK VALVE.

S.A. PACKLESS BUCK VALVE

<u>ITEM NO</u>	<u>DESCRIPTION</u>	<u>PART NO.</u>
1.	DISC HOLDER	HM 7547 7547
2.	GUIDE LOCK NUT	HM 7560
3.	VALVE STEM.	HM 7561
4.	VALVE DISC.	X 7574
5.	PACKLESS BODY	HM 7620
6.	LOCKNUT	HM 7621
7.	STEM GUIDE	HM 7622
8.	GASKET CU ASBESTOS $\frac{5}{18}$ O.D. x $\frac{9}{32}$ I.D. x $\frac{3}{32}$	XWP/1/188

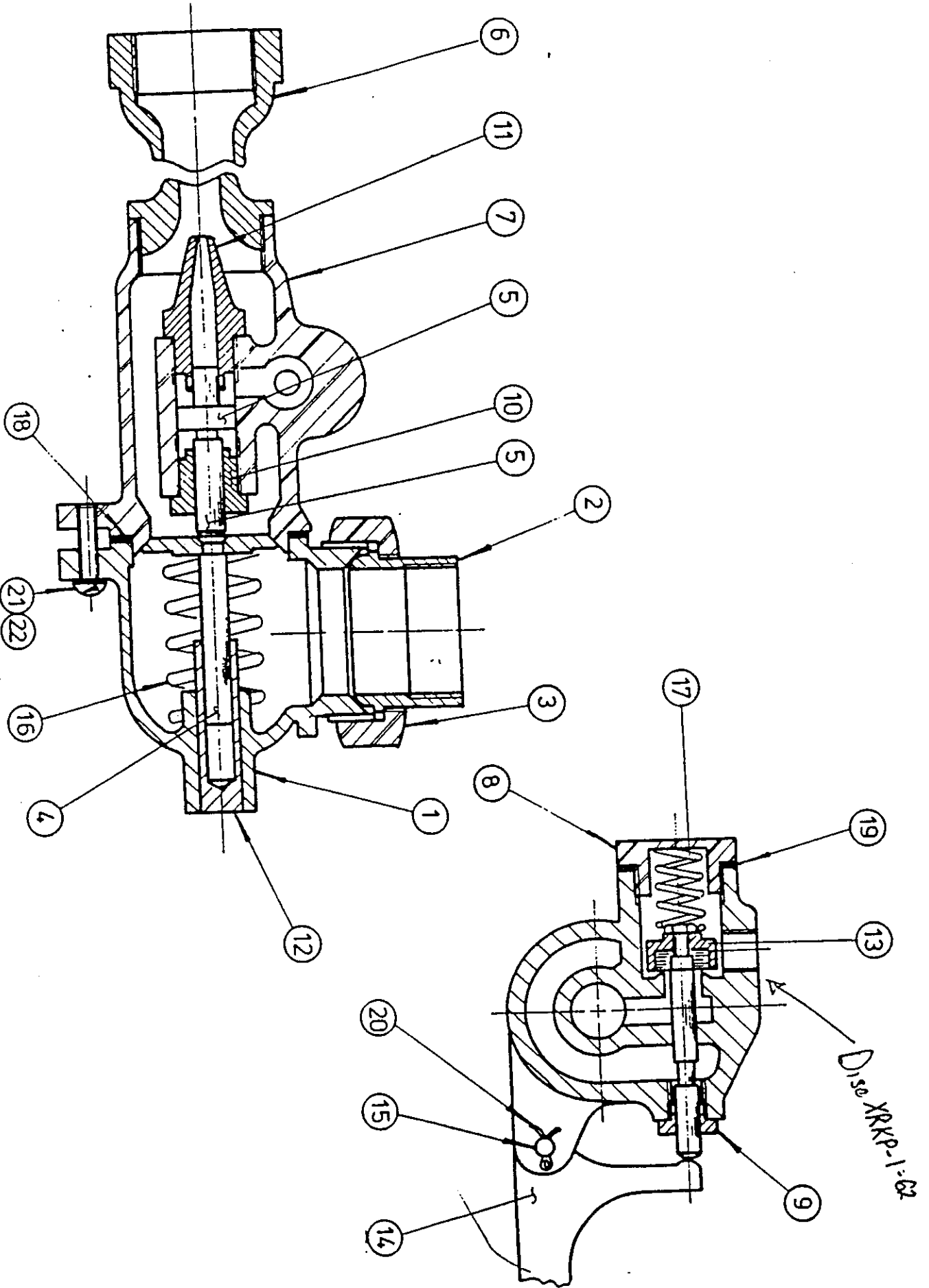


VACUUM VALVE.

VACUUM VALVE

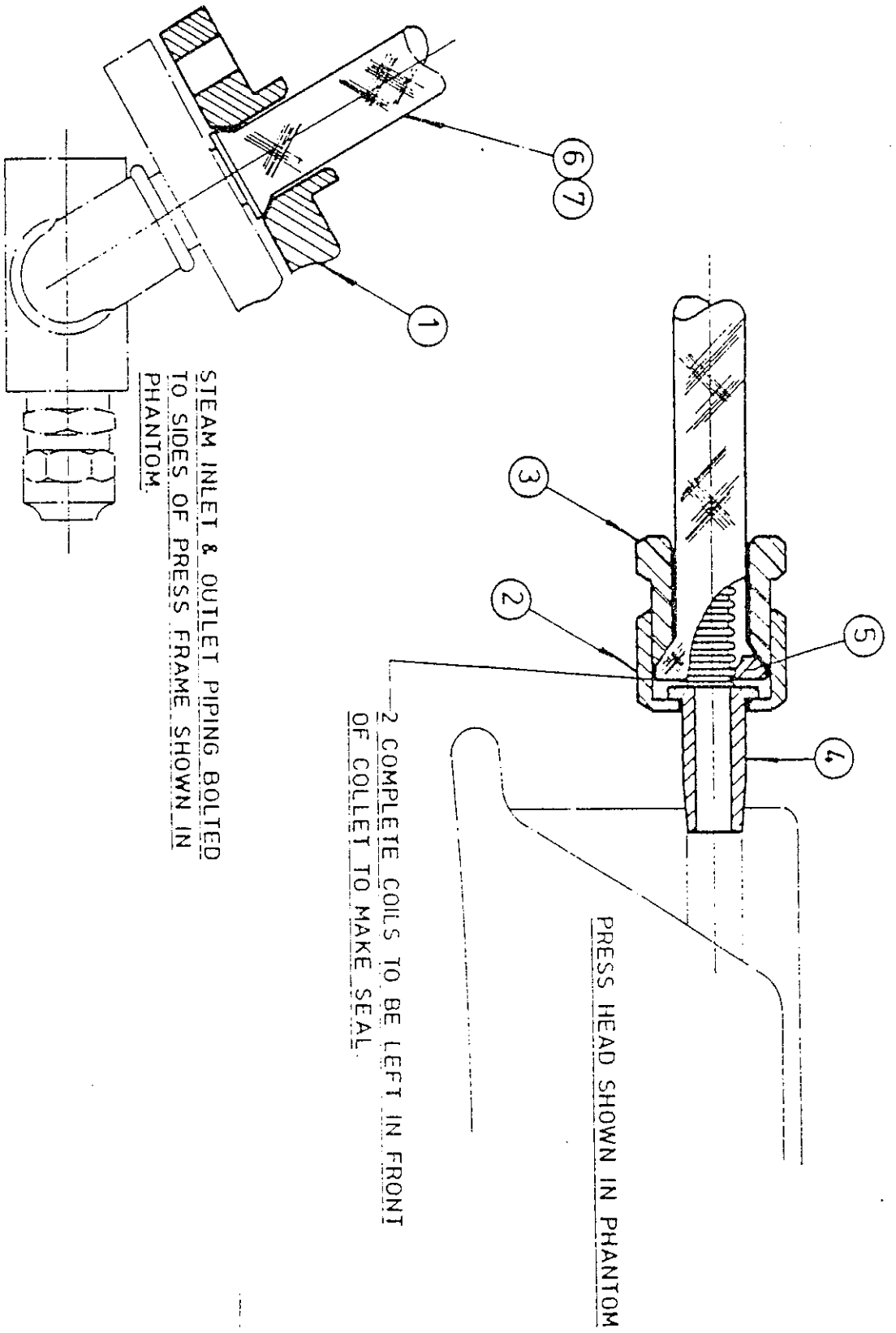
<u>ITEM</u>	<u>DESCRIPTION</u>	<u>PART NO.</u>
1.	VALVE BODY	7562
2.	TAIL PIECE	7563
3.	TAIL NUT	7564 /
4.	VALVE SEAT	7567
5.	FULCRUM	7568
6.	VALVE STEM WASHER	7569
7.	S.A. AIR OUTLET VALVE	<i>HM</i> 7588
8.	OPERATING ARM	762 8 3
9.	VALVE SPRING	<i>XSP</i> C.S.1
10.	OILITE BUSH $\frac{1}{2}$ " O.D. x $\frac{3}{8}$ " I.D. x $\frac{1}{2}$ " LONG	
11.	CLEVIS PIN $\frac{5}{16}$ " ϕ x $\frac{3}{4}$ " LONG	
12.	SPLIT PIN	
13.	SHAKEPROOF WASHER $\frac{1}{2}$ " ϕ	
14. <i>XWP/1/85.</i>	GASKET KLINGERITE 1,6 x 50 I.D. x 64 O.D.	
15.	SCREW $\frac{1}{2}$ " B.S.W. x $\frac{1}{2}$ " R'D H'D	
16.	SCREW $\frac{1}{2}$ " B.S.W. x 1" R'D H'D	

S.A. STEAM VACUUM VALVE.



S.A. STEAM VACUUM VALVE

<u>ITEM</u>	<u>DESCRIPTION</u>	<u>PART NO.</u>
1.	VALVE BODY,	7562
2.	TAIL PIECE	7563
3.	TAIL NUT	7564
4.	S.A. VENTURI VALVE	7705
5.	VENTURI VALVE NIPPLE	7709
6.	VERTURI NIPPLE	7710
7.	VENTURI VALVE BODY	7711
8.	BODY CAP	7712
9.	STEM BUSH	7713
10.	GUIDE NUT	7714
11.	VENTURI NOZZLE	7715
12.	VALVE BUSH	7716
13.	S.A. STEAM INLET VALVE	7722
14.	BELL CRANK	7723
15.	CLEVIS PIN NO. 3	9022
16.	SPRING	CS 1
17.	SPRING	CS 12
18.	GASKET KLINGERITE $\frac{1}{16}$ 2" I.D. x $2\frac{1}{2}$ " O.D. x $\frac{1}{16}$	P/1/85
19.	CU. ASBESTOS GASKET	P/1/189
20.	SPLIT PIN $\frac{3}{32}$ ϕ x $\frac{3}{4}$ L'G	
21.	SCREW $\frac{1}{2}$ " B.S.W. x 1" L'G	
22.	SPRING WAHSER $\frac{1}{2}$ " ϕ	



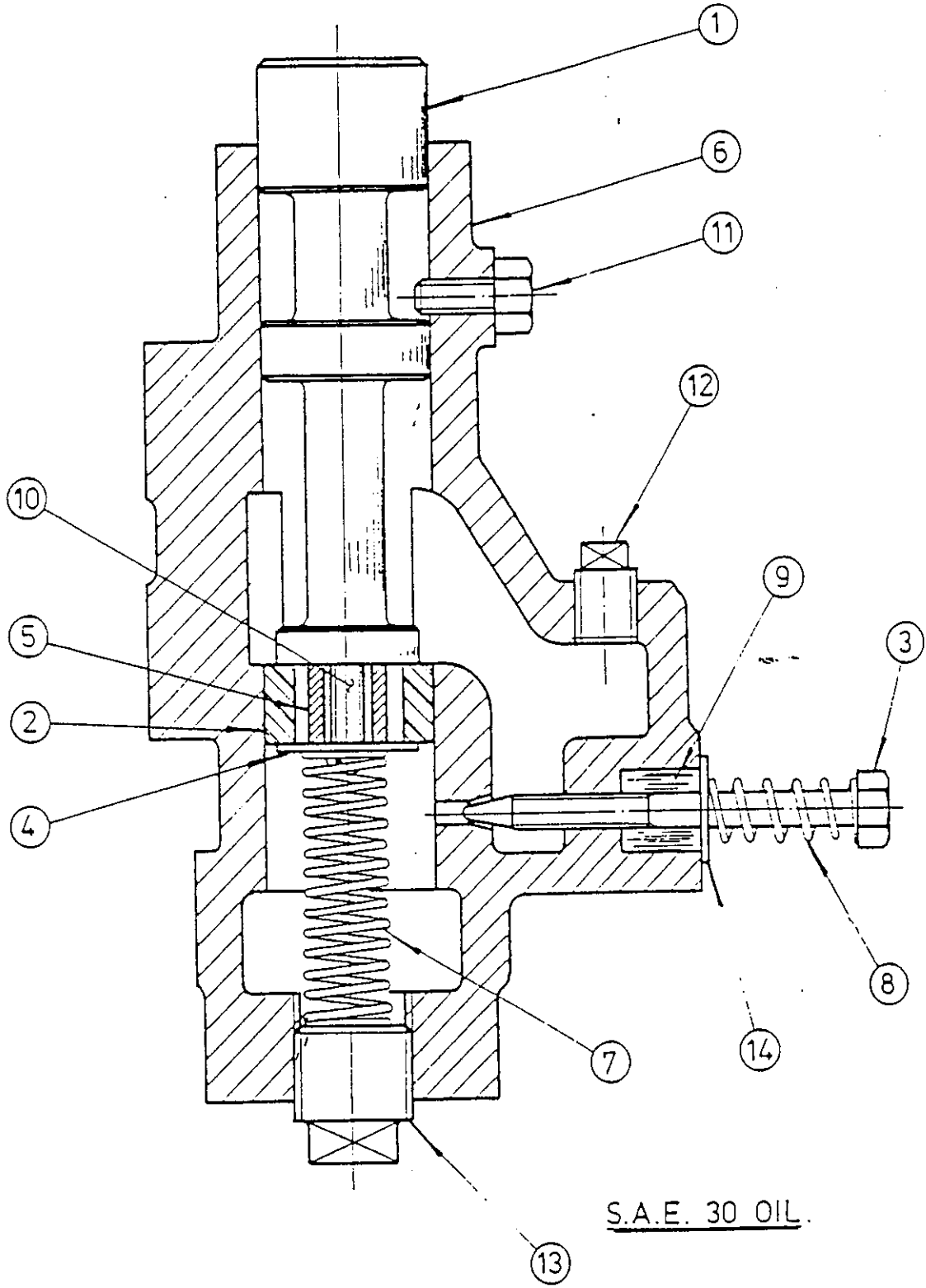
S.A. FLEXIBLE STEAM HOSE.

TYPE 'A'

S.A. FLEXIBLE STEAM HOSE TYPE "A"

<u>ITEM</u>	<u>DESCRIPTION</u>	<u>PART NO.</u>
1.	STEAM HOSE CONN. FLANGE	7537 .
2.	STEAM HOSE NUT	7542 .
3.	STEAM HOSE NIPPLE	7543 .
4.	STEAM HOSE CONN. NIPPLE	7544 .
5.	COLLET	7545 .
6.	* L.H. $\frac{3}{8}$ " I.D. ANACONDA STEAM HOSE TYPE S.I.	7585
7.	* R.H. $\frac{3}{8}$ " I.D. ANACONDA STEAM HOSE TYPE S.A.	7586

* HMB-1-5A16 STEAM HOSE
2 PER UNIT

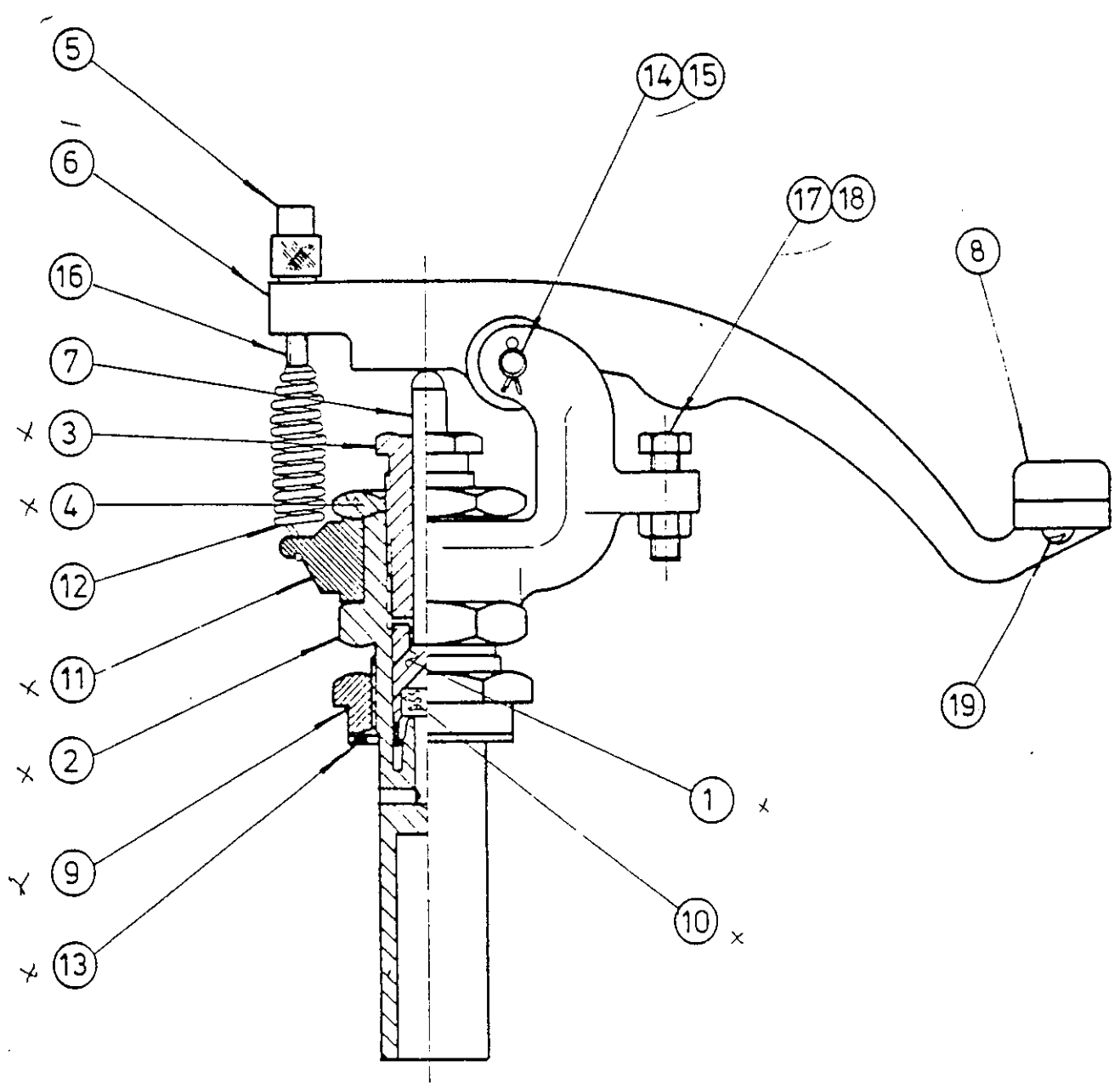


S.A.E. 30 OIL.

OIL CHECK

OIL CHECK

<u>ITEM</u>	<u>DESCRIPTION</u>	<u>PART NO.</u>
1.	PLUNGER	7541
2.	PISTON	7548
3.	ADJUSTING SCREW	7549
4.	WASHER	7550
5.	SPACER	7551
6.	BODY	7583
7.	PLUNGER SPRING	CS 7
8.	ADJUSTING SPRING	CS 13
9.	RUBBER WASHER $\frac{1}{2}$ " I.D. x $\frac{1}{2}$ " O.D. x $\frac{3}{16}$ " L'G	
10.	$\frac{1}{2}$ " B.S.W. R'd H'd SCREW x $1\frac{1}{2}$ " LONG	
11.	$\frac{1}{2}$ " B.S.W HEX. H'd SCREW x $\frac{1}{2}$ " LONG	
12.	$\frac{1}{8}$ " B.S.P. PLUG	
13.	$\frac{1}{7}$ " B.S.P. PLUG	
14.	$\frac{1}{4}$ " WASHER	



HEAD VALVE

HEAD VALVE

<u>ITEM</u>	<u>DESCRIPTION</u>	<u>PART NO.</u>
1.	DISC HOLDER	HM7547
2.	HEAD VALVE BODY	7552
3.	VALVE STEM GUIDE	7553
4.	STEM GUIDE LOCKNUT	7554
5.	KNURLED NUT	7555
6.	VALVE HANDLE	7556
7.	HEAD VALVE STEM	7557
8.	HANDLE BLOCK	7558
9.	BODY LOCKNUT	7572
10.	VALVE DISC.	X7574
11.	HANDLE BEARING	7627
12.	HEAD VALVE SPRING	XSP TS-12
13.	CU ASBESTOS WABSER	XWP/11/187
14.	CLEVIS PIN	
15.	SPLIT PIN	
16.	$\frac{3}{16}$ " B.S.W. C'sk SCREW x 2"	
17.	$\frac{1}{2}$ " B.S.W. x 1" SCREW	
18.	$\frac{1}{2}$ " NUT	
19.	$\frac{3}{16}$ " B.S.W. x $\frac{1}{2}$ " R'd H'd SCREW	